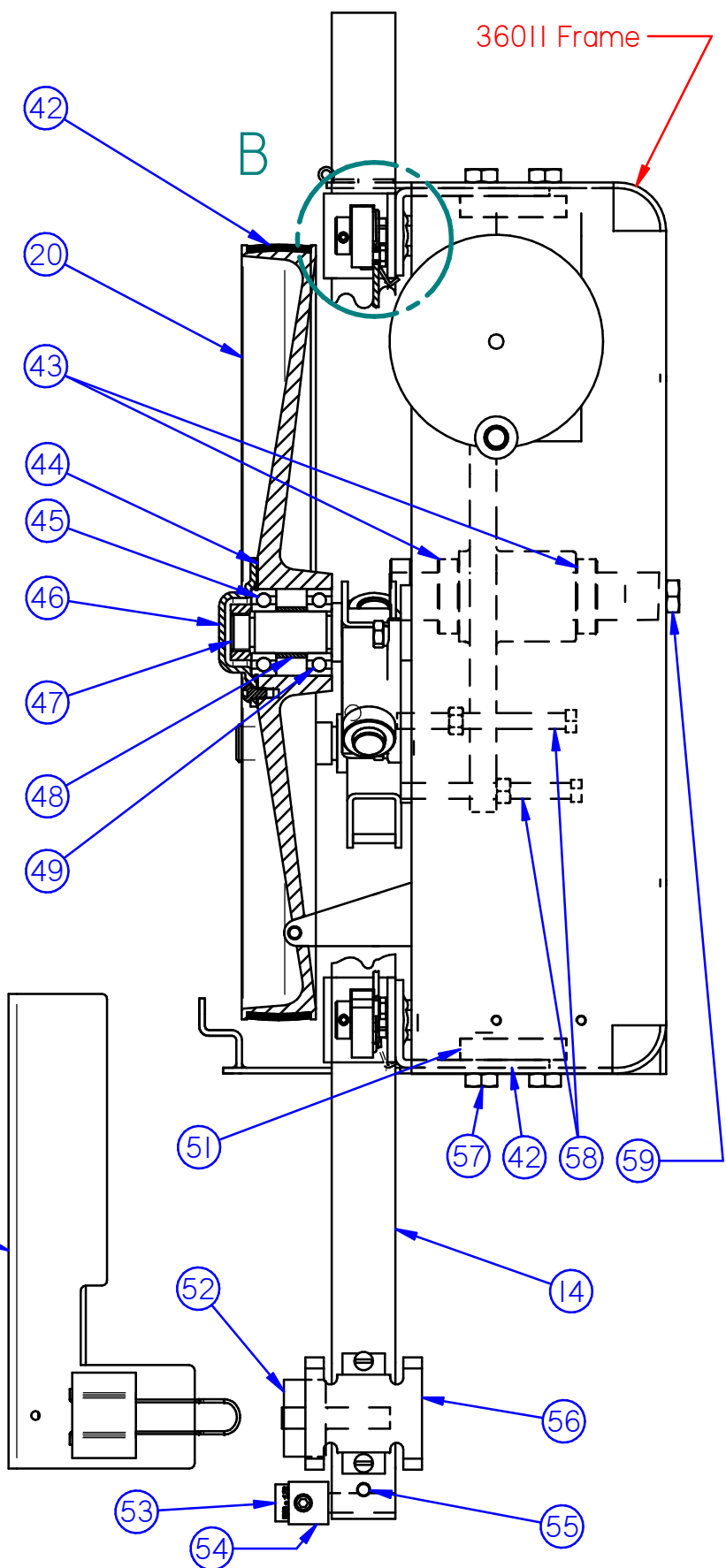
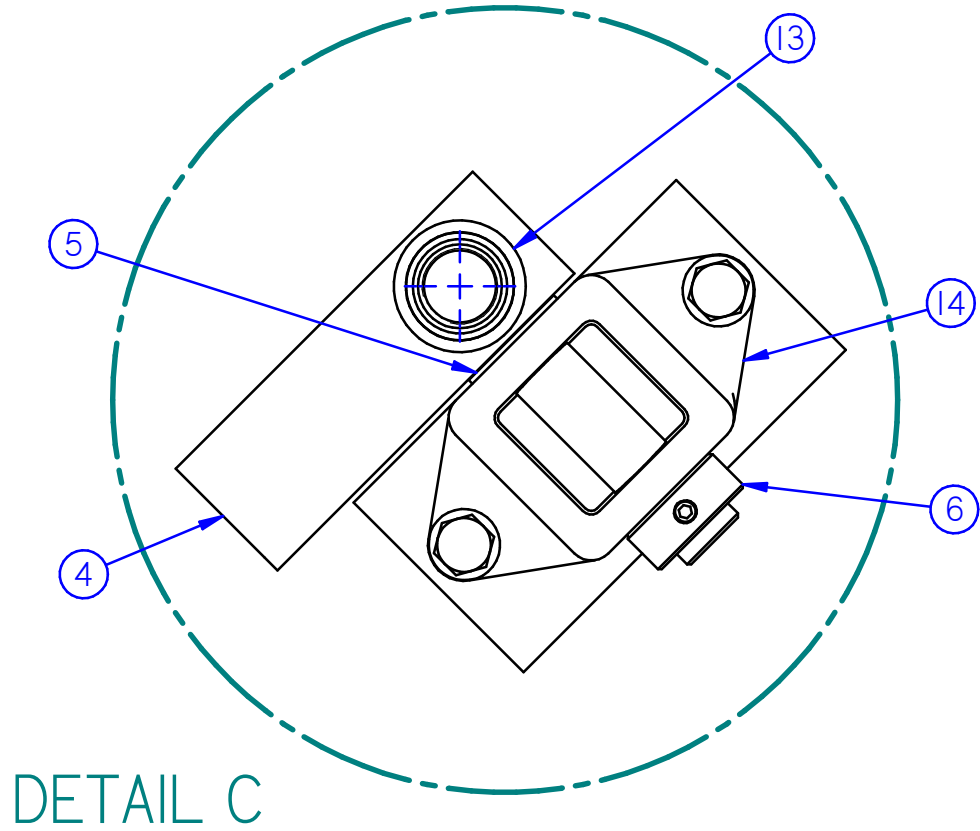
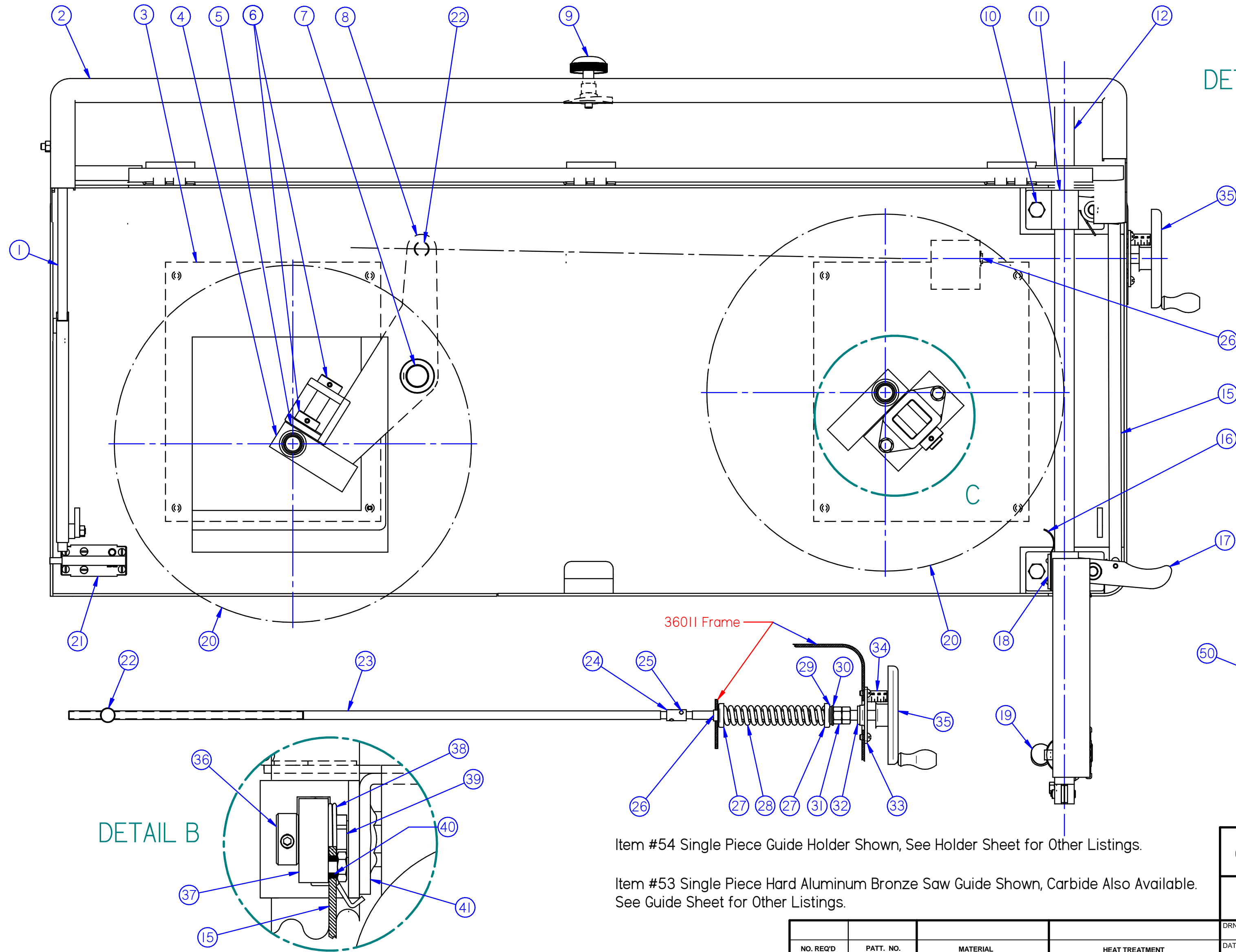


Item	Part No.	Description	Qty.	Item	Part No.	Description	Qty.	Item	Part No.	Description	Qty.	Item	Part No.	Description	Qty.
1		Atwood #12595 Door Prop	2	16	18170	Tension Spring	1	31		1/2-20 Jam Nut	2	46	S-1152	Bearing Cover	2
2	36021	Upper Door Assembly	1	17	S-1022	Lower Guide Bar Clamp	1	32	FF-707-5	Oilite Bushing	1	47		7/8-14 Hex Nut	2
3	36025	Cover for Access Hole	2	18	18289	Tension Spring Clamp Plate	1	33	18177	Tension Screw Support Brkt.	1	48	GS-2147	Upper Pulley Bearing Spacer	2
4	S-1296	Pulley Pivot Channel Ass'y.	2	19		1/4-20 x 1/2 Thumb Screw	1	34	18176	Tension Indicator	1	49	6205-Z	Peer Bearing	2
5		Shim Washer	2	20	GS-2068-1	Upper Saw Pulley	2	35	18391	Tension Handwheel Assy.	1	50	18141	Upper Saw Band Guard	1
6	18348	3/4" Set Collar	3	21	18285	Switch Assembly	1	36	18232	1/2" Set Collar	2	51	18185	Clamp Block	2
7	GS-1513	Idler Pulley Lever Shaft	1	22	S-1090	Tension Screw Nut	1	37	S-1023	Upper Guide Bar Clamp	1	52	S-1276	Saw Band Oiler Assembly	1
8	GS-1512	Idler Pulley Lever	1	23	S-943	Saw Band Tension Screw	1	38	S-1077	Guide Bar Clamp Spring	2	53	Guide	1 Pc.Hard Aluminum Bronze	1
9	GS-2212	Door Knob Assembly	1	24	S-1053	Universal Coupling	1	39	18214	Guide Bar Clamp Pin	2	54	S-1071	1/8"-1/2" S-1124 5/8"-1"	1
10		1/2-20 x 3/4 Hex Bolt	2	25	18358	Pin	2	40	GS-2222	Clamp Link Spacer	2	55	S-547	Guide Holder Clamp Stud	1
11	S-1017	Guide Bar Block	2	26	S-1102	Handwheel Shaft Bearing	1	41	18169	Guide Bar Bracket	2	56	GS-2249	Saw Band Guard Nest	1
12	18139	Upper Guide Bar	1	27	S-1084	Compression Spring Cup	2	42	GS-2079	18" Pulley Tire	2	57		1/2-13 x 3/4 Hex Bolt	4
13	18324	Upper Pulley Bearing Spacer	2	28	S-1135	Compression Spring	1	43	18349	1 1/8" Set Collar	2	58		3/8-16 x 4 Square Hd Screw	2
14	S-966	Pivot Bracket	1	29	R5498	NICE Bearing	1	44	GS-2367	Gasket	2	59		1/2-13 x 1 Hex Bolt	1
15	36020	Clamp Link	1	30	S-1167	Retaining Washer	1	45	6205-NR	Peer Bearing	2	60			



Item #54 Single Piece Guide Holder Shown, See Holder Sheet for Other Listings.

Item #53 Single Piece Hard Aluminum Bronze Saw Guide Shown, Carbide Also Available.
See Guide Sheet for Other Listings.

GROB INC. GRAFTON, WIS.			
Head Assembly for 4V-36 Band Saw			
DRN. KS	TR.	CH.	DWG. NO.
DATE 5-7-03	SCALE 1:4	O.K. Rev I	36017-C

NO. REQ'D	PATT. NO.	MATERIAL	HEAT TREATMENT