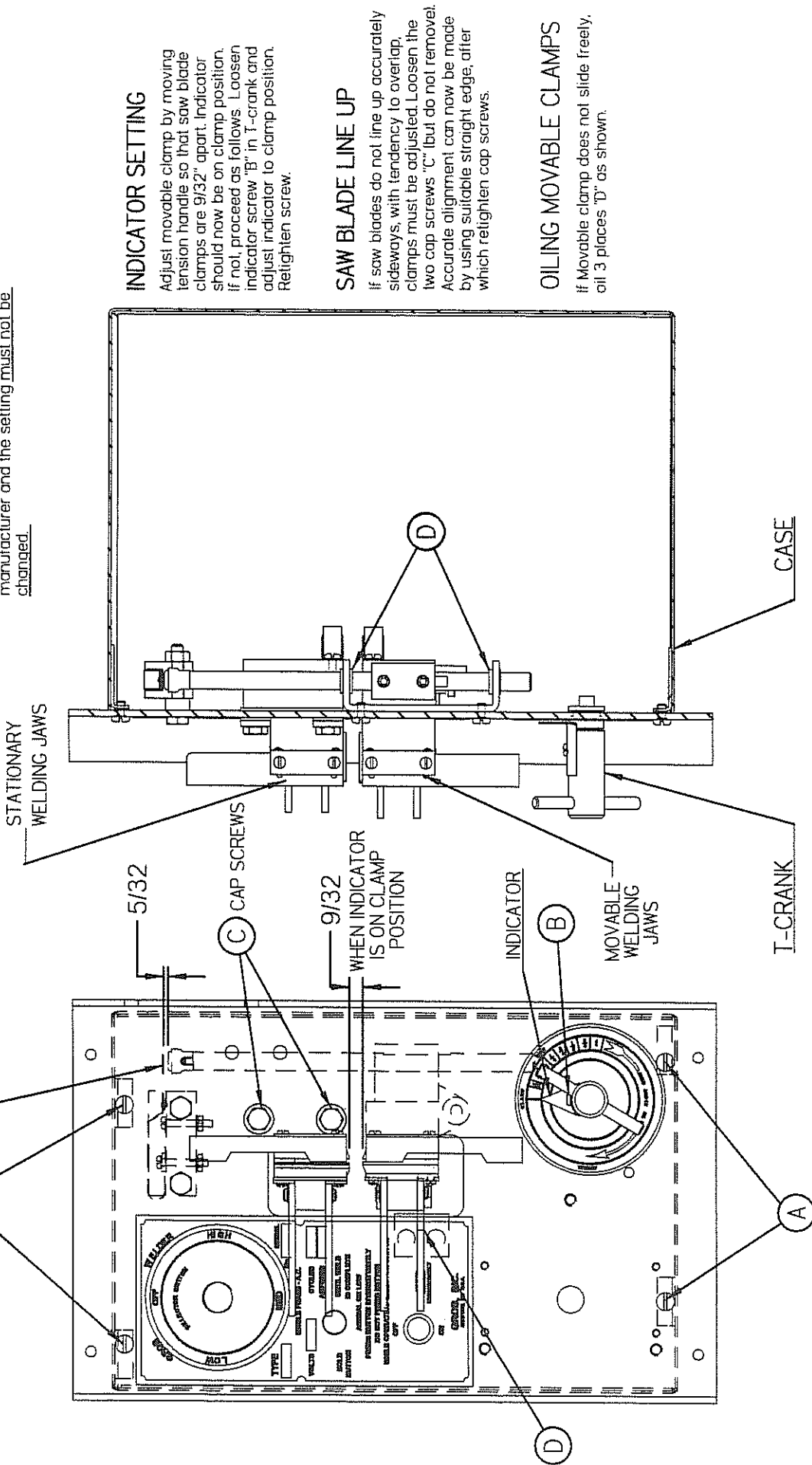


SETTING AND TIMING INSTRUCTIONS FOR RWA GROB BUTT WELDER

When clamps are 9/32" apart, the gap between shaft and switch breaker arm should be 5/32". Set originally by manufacturer and the setting must not be changed.



INDICATOR SETTING

Adjust movable clamp by moving tension handle so that saw blade clamps are 9/32" apart. Indicator should now be on clamp position. If not, proceed as follows. Loosen indicator screw "B" in T-crank and adjust indicator to clamp position. Retighten screw.

SAW BLADE LINE UP

If saw blades do not line up accurately sideways, with tendency to overlap, clamps must be adjusted. Loosen the two cap screws "C" (but do not remove). Accurate alignment can now be made by using suitable straight edge, after which retighten cap screws.

OILING MOVABLE CLAMPS

If Movable clamp does not slide freely, oil 3 places "D" as shown.

TO REMOVE CASE FROM WELDER,
REMOVE 4 SCREWS "A"